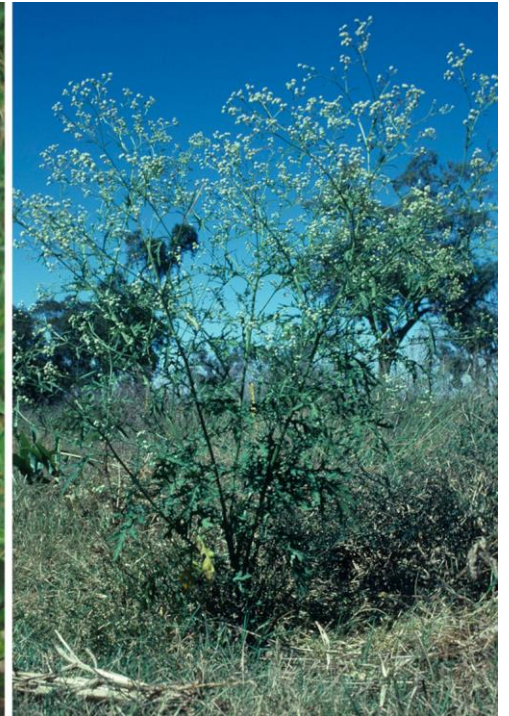


# Seen this plant? Parthenium weed

*Parthenium hysterophorus*



## How does this weed affect us?

Parthenium weed invades pastures and crops. It causes severe human health problems including:

- respiratory problems
- severe dermatitis.

It can also cause health problems in livestock.

## Parthenium weed:

- is unpalatable to livestock
- outcompetes pastures
- can taint meat or milk
- reduces crop yields
- contaminates grain
- is a host plant for crop viruses.

Seen it? Call us:

NSW DPI Biosecurity Helpline

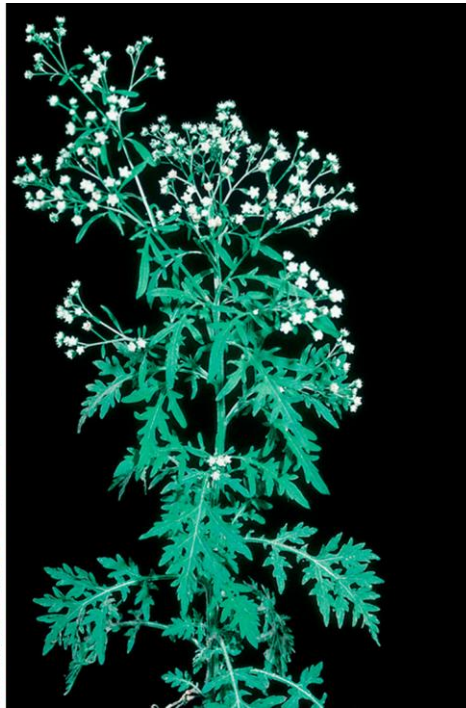
1800 680 244

Help protect our farms and grazing lands.

For control and biosecurity information visit NSW WeedWise:

[weeds.dpi.nsw.gov.au/weeds/partheniumweed](https://weeds.dpi.nsw.gov.au/weeds/partheniumweed)





### Where are you likely to find it?

Parthenium weed has recently been found in several locations across NSW.

Look for it where:

- livestock (including poultry) have been fed grain or hay, particularly if it has come from Queensland
- earthworks have taken place, particularly if machinery has been in Queensland
- there is bare soil (cultivated areas, roadsides, poor pastures)
- grain crops have been harvested by a contractor.

Check regularly and especially after rain.

### What does it look like?

It usually grows up to 1.5 m tall but can be up to 2 m tall.

**Leaves** are pale green and covered in soft fine hairs. Lower leaves are 5–20 cm long and deeply divided. Upper leaves are smaller and less divided.

**Flowers** are creamy white, 4–6 mm across and star-like with 5 distinct corners. Flower clusters are delicate and look a bit like "baby's breath".

**Stems** are grooved, woody when older, and have many branches when flowering.

## Seen it? Call us:

## NSW DPI Biosecurity Helpline

## 1800 680 244

Help protect our health and environment.

For control and biosecurity information visit NSW WeedWise:

[weeds.dpi.nsw.gov.au/weeds/partheniumweed](https://weeds.dpi.nsw.gov.au/weeds/partheniumweed)

